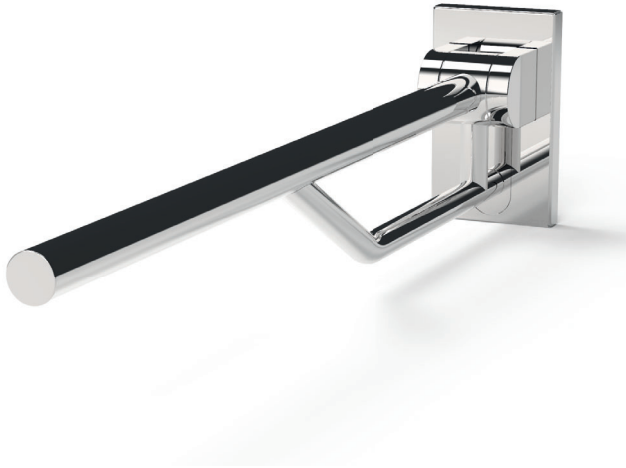


FITZROY OF LONDON

Product Data Sheet: FL01-055-09

The Gosfield - 800mm Stainless Steel Removable Hinged Support Rail With Return To Wall



Product Detail:

- **Area of use** - Suitable for washroom areas
- **Material** - Stainless Steel
- **Colour and finish options** - PVD Finishes, Traditional Finishes, Basic Finishes
- **Warranty** - 2 Years
- **Max weight load** - 120kg

Surface finish: Polished Chrome

Product Dimensions (mm):

