

FITZROY OF LONDON

Product Data Sheet: FL13-050-09

The Kirkman - 800mm Stainless Steel Art Deco Inspired Removable Circular Wall Plate Single Arm Hinged Support Rail

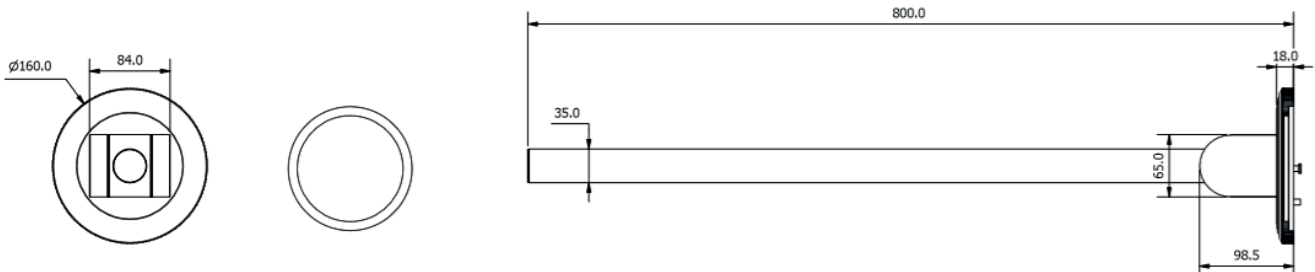


Product Detail:

- **Area of use** - Suitable for washroom areas
- **Material** - Stainless Steel
- **Colour and finish options** - PVD Finishes, Traditional Finishes, Basic Finishes
- **Warranty** - 2 Years
- **Max weight load** - 120kg

Surface finish: Polished Chrome

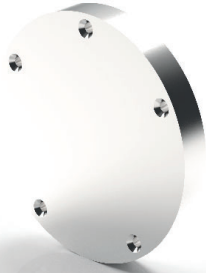
Product Dimensions (mm):



FITZROY OF LONDON

Product Data Sheet: Back plate for FL13-050-09

Circular Backing Plate for Fixed Hinge Rail, 20mm THK



Product Detail:

- Material - Stainless Steel
- Max weight load - 120kg

Surface finish: Stainless Still Mill

Product Dimensions (mm):

