

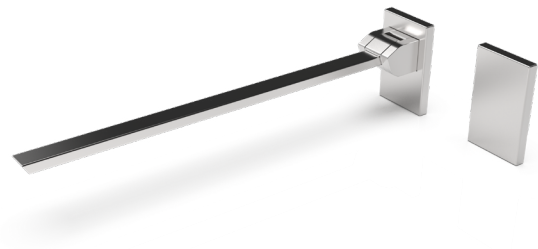
PRODUCT DATA SHEET

Product Code: FL08-050-09

Product Description: The Mortimer - 800mm Stainless Steel Concealed Fixing Removable Single Arm Hinged Support Rail

Product Detail:

- Area of use - Suitable for toilet & washroom areas
- Material - Stainless Steel
- Warranty - 2 Years
- Max weight load - 100kg
- Colour and finish options - PVD Finishes, Plated Finishes, Basic finishes



Product Dimensions (mm):

